

Genere e carriere negli Atenei italiani

Romana Frattini

Università di Venezia, Ca' Foscari

Donne: istruzione e lavoro

Gender gap WEF

- **Educational attainment**

presenza a scuola F/M=1

presenza all'università F/M=1.4

STEM F/M=0.5

Economic participation and opportunity 117

Senior and manager F/M=0.36

paga per lavori simili F/M= 0.51

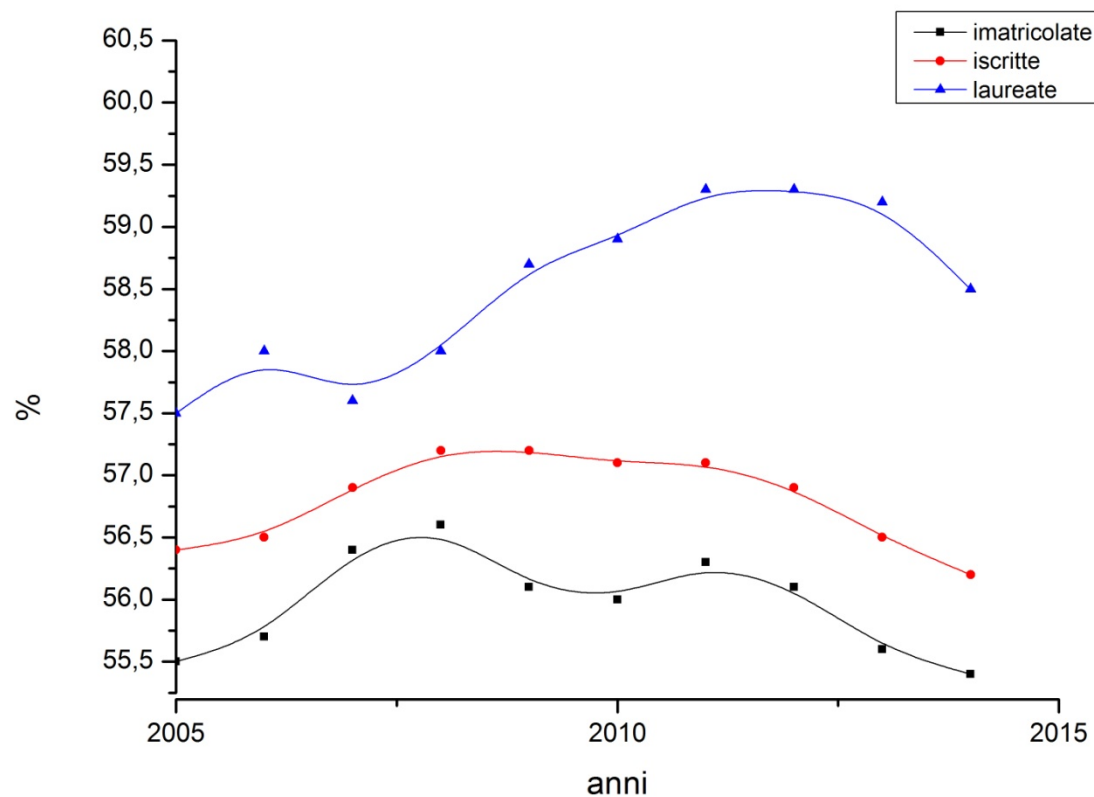
La situazione all'Università?

Studentesse

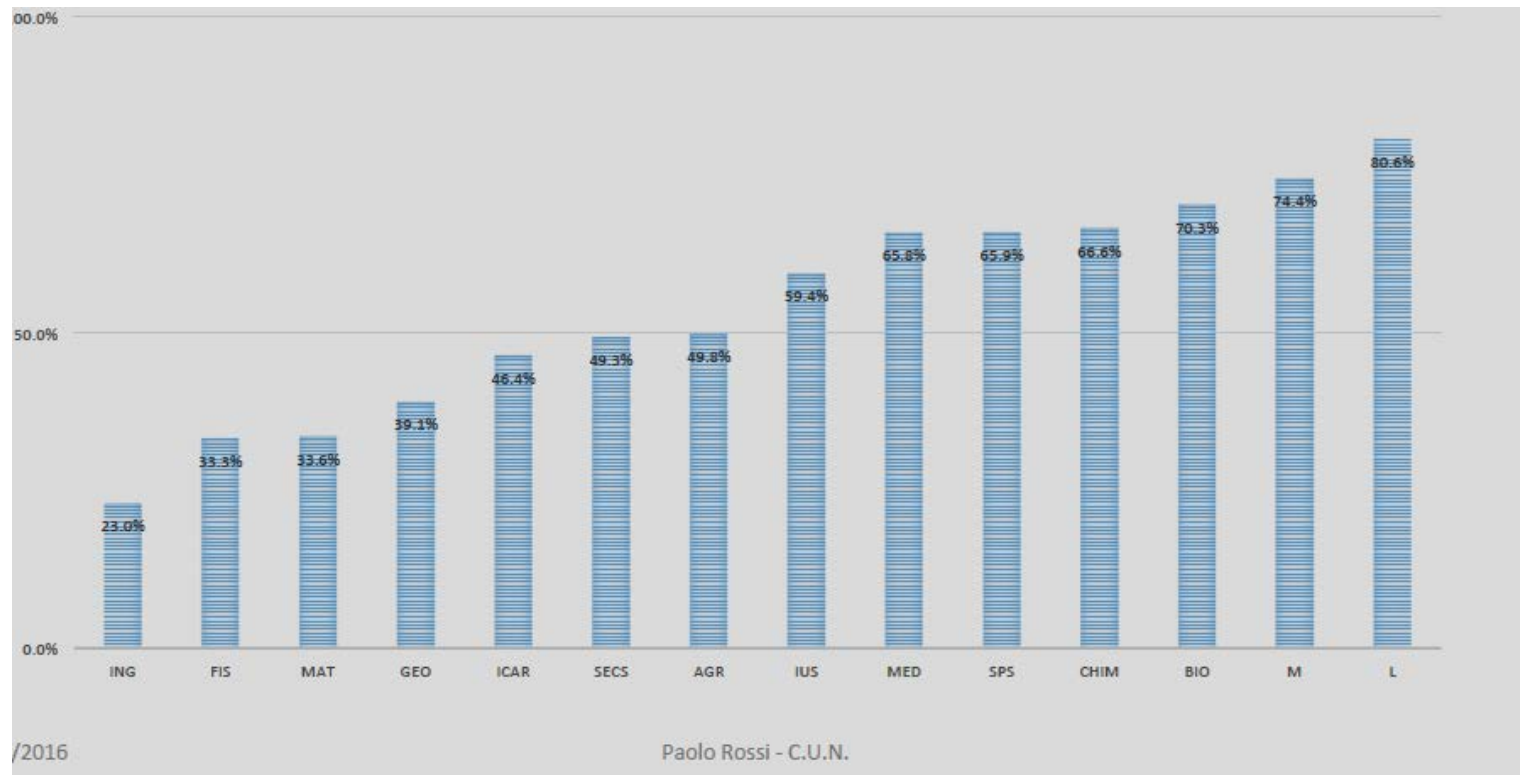
Immatricolati:
324 000- 255 000

Iscritti:
1824 000- 1652 000

Laureati
175000 I livello
125000 II livello



Aree disciplinari

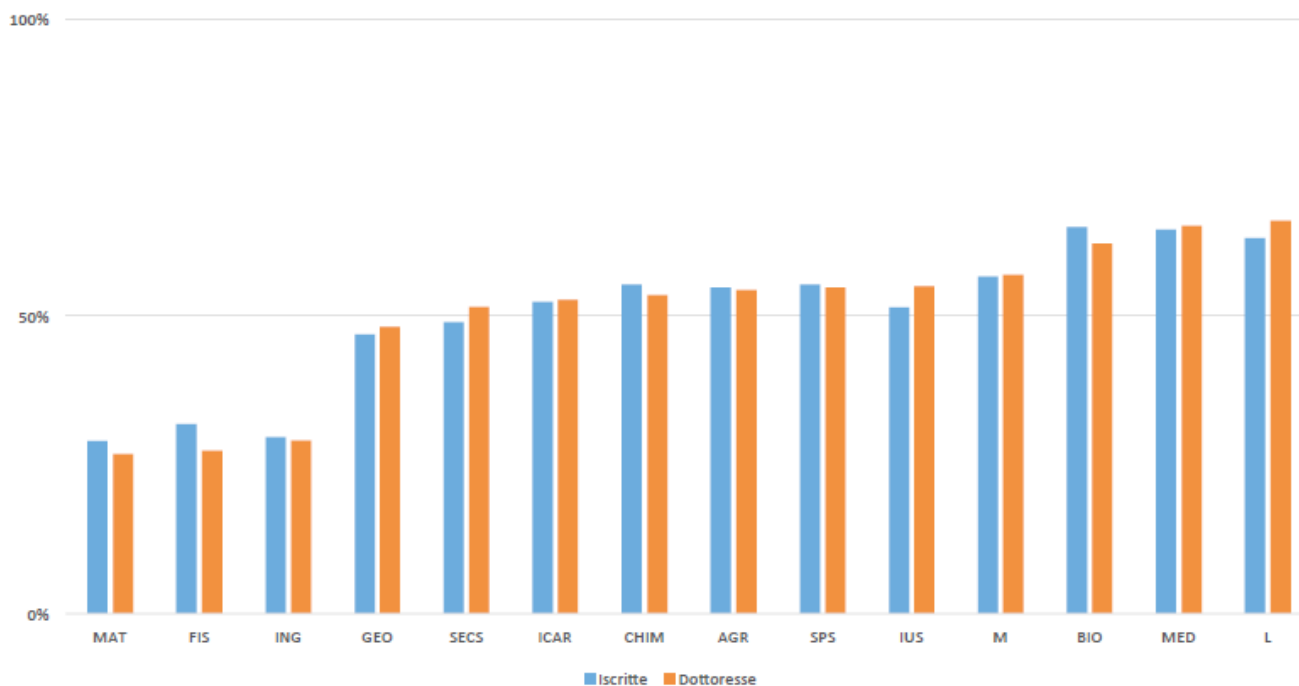


Dottorato di ricerca

Iscritti: 38750-33500

dottori 11900-10750

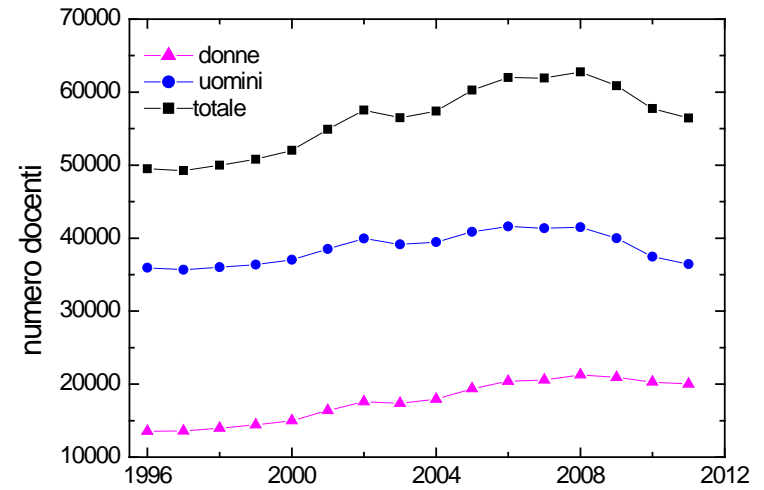
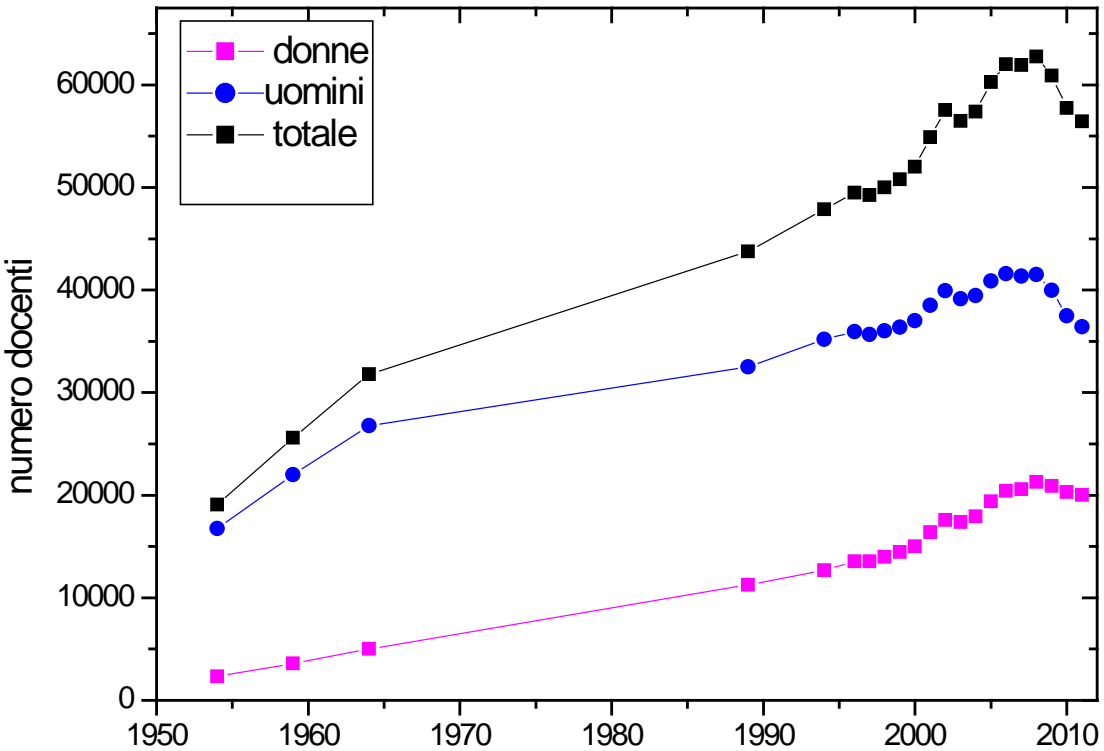
% dottorande 52%



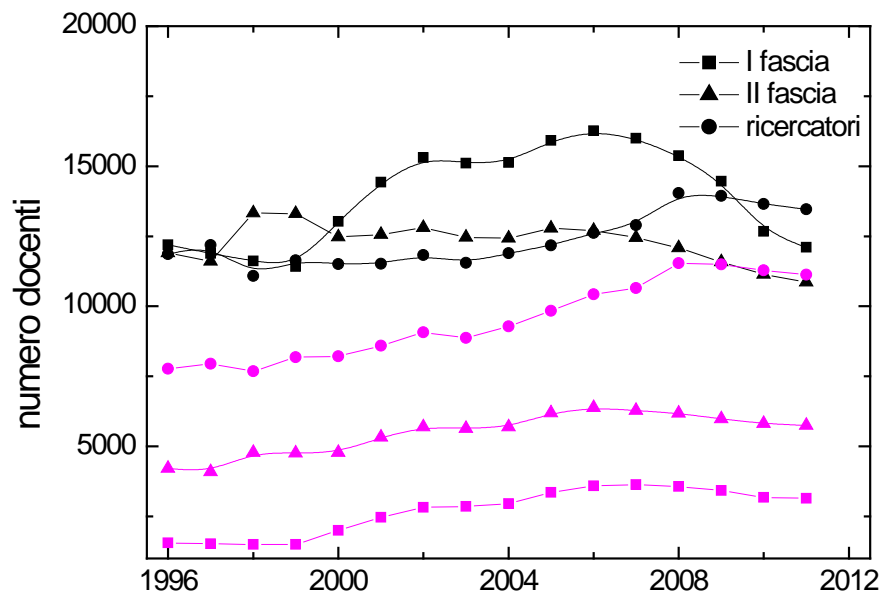
Assegnisti, borsisti e professori a contratto

assegnisti	2006	10430	51.1%
	2015	20688	50.%
PC	2006	35000	60%
	2015	28400	60%

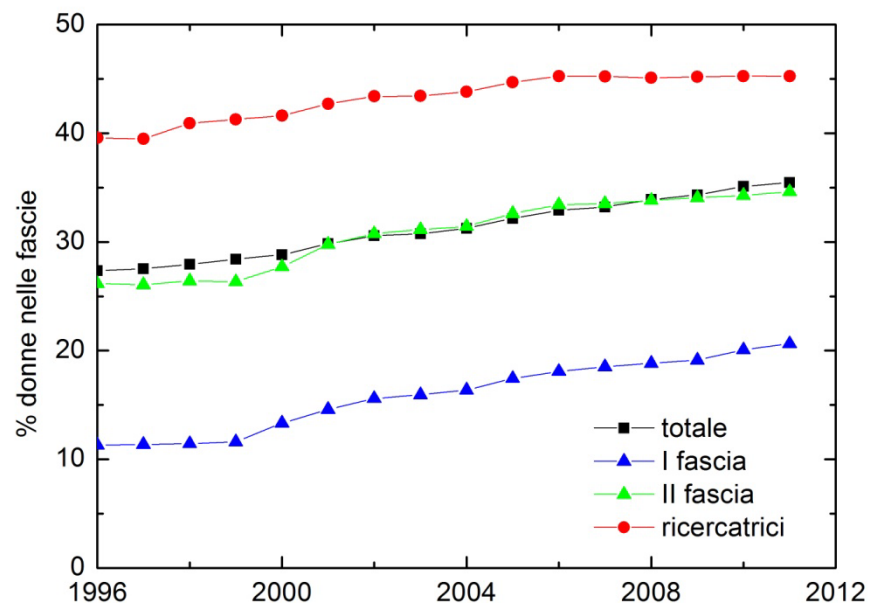
Docenti donne:



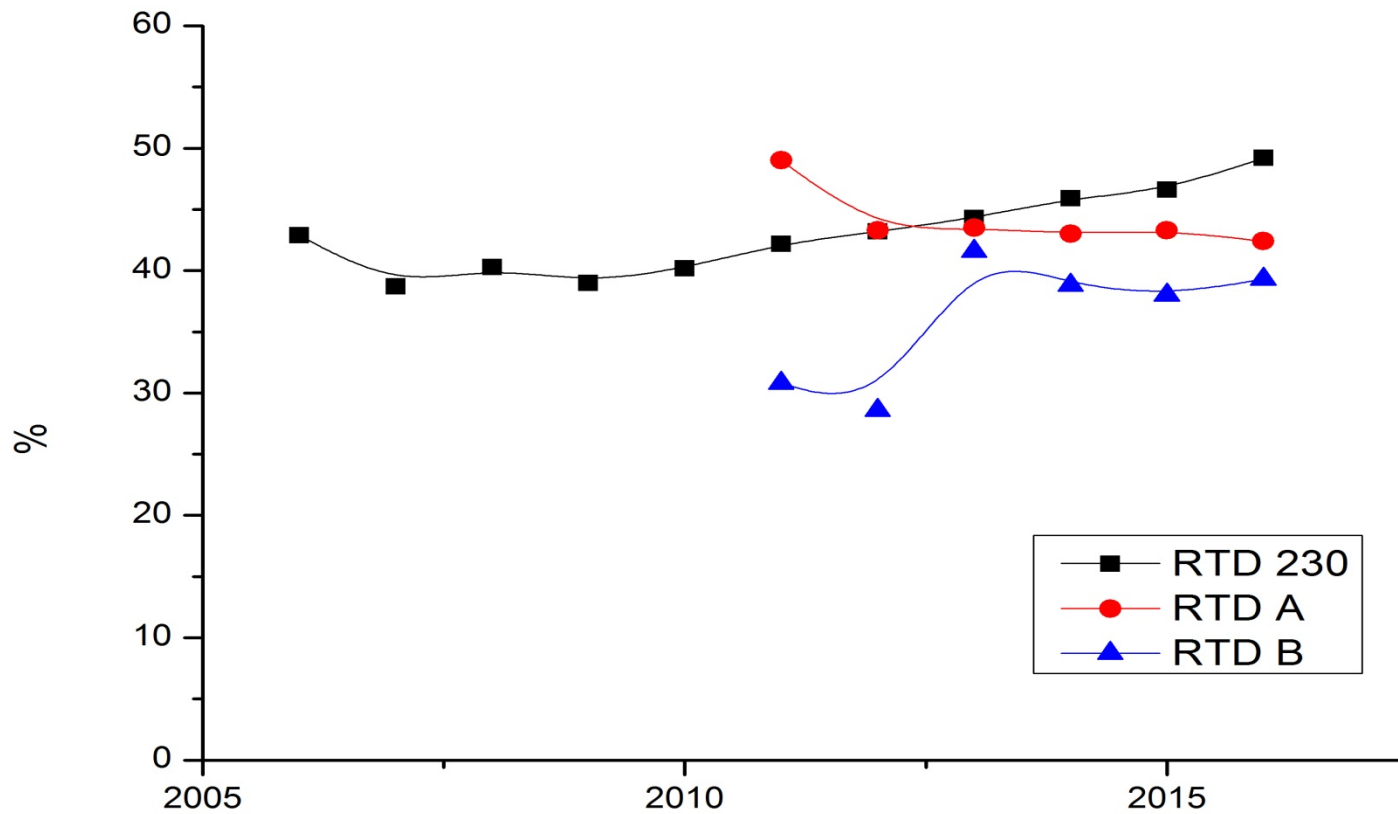
Docenti donne



Presenza nelle fasce
Reclutamento
Pensionamento

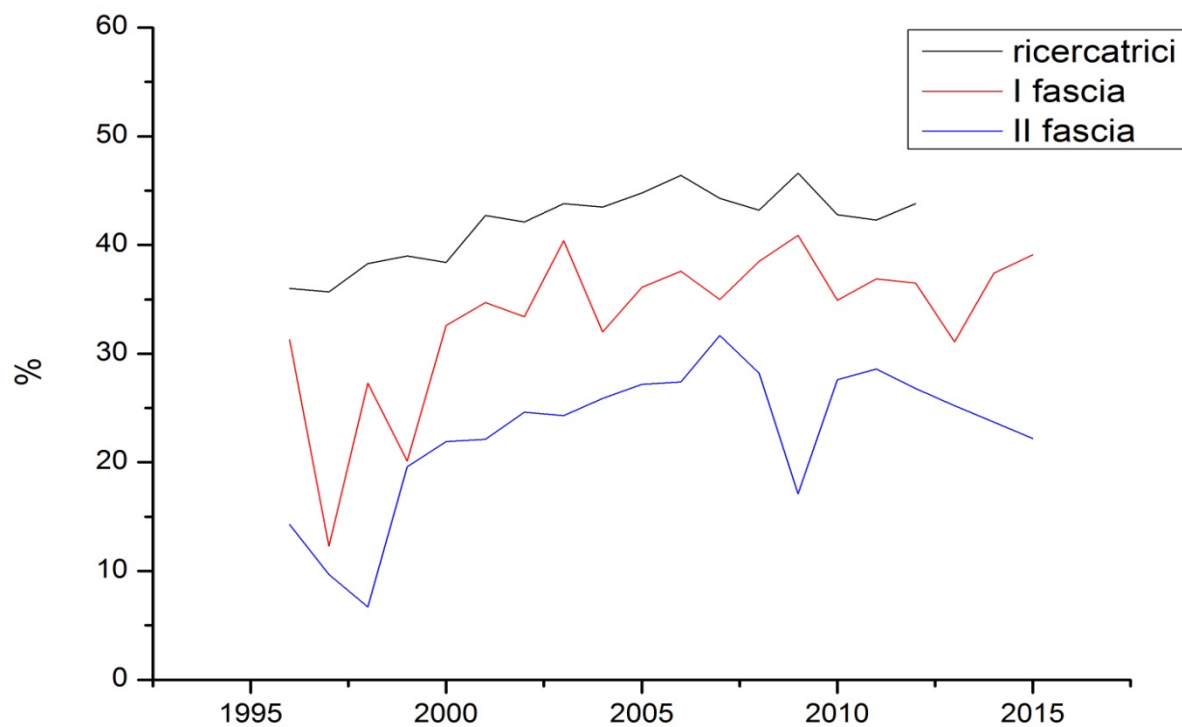


Ricercatori tempo determinato



Il reclutamento

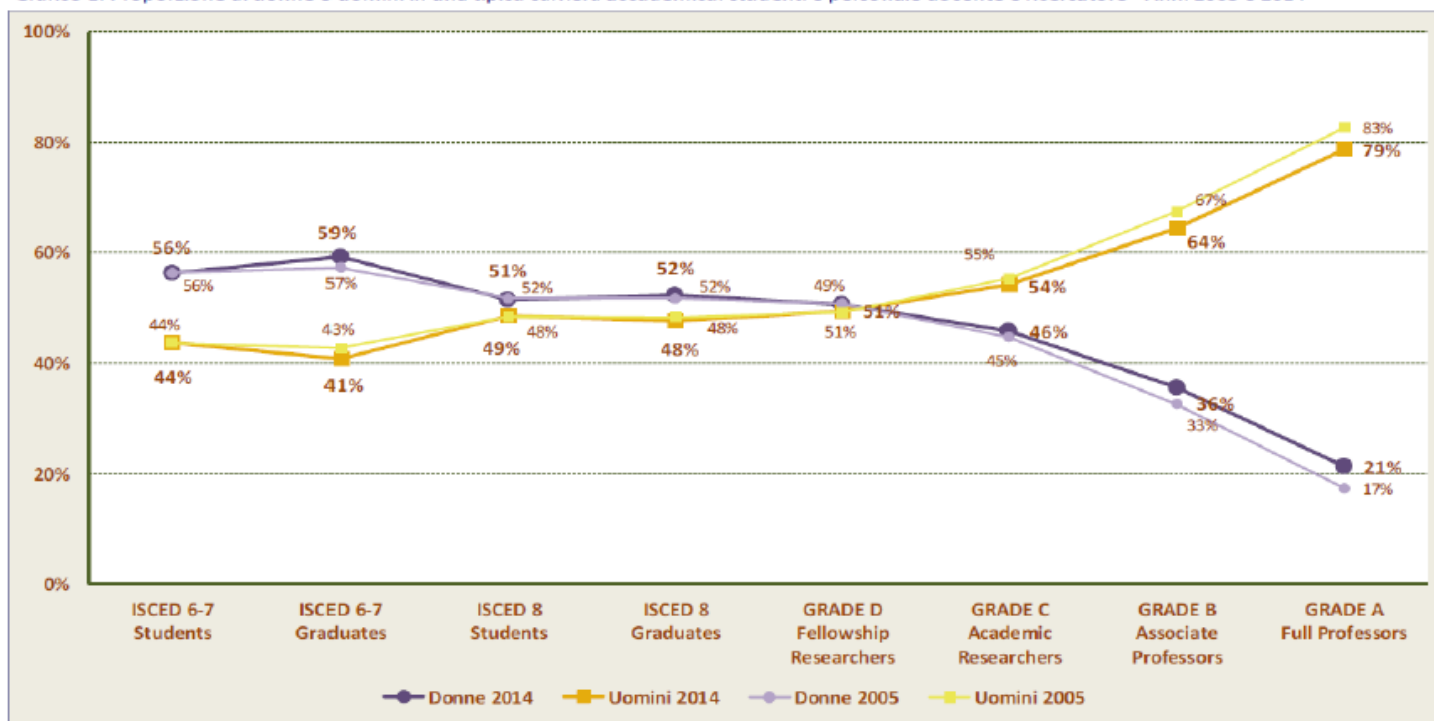
Percentuale di donne reclutate nelle diverse fasce



Le carriere

Glass ceiling index 2.0 -2.1
She figures 1.75

Gráfico 1: Proporzioni di donne e uomini in una tipica carriera accademica: studenti e personale docente e ricercatore - Anni 2005 e 2014



Fonte: MIUR - Ufficio Statistica e Studi

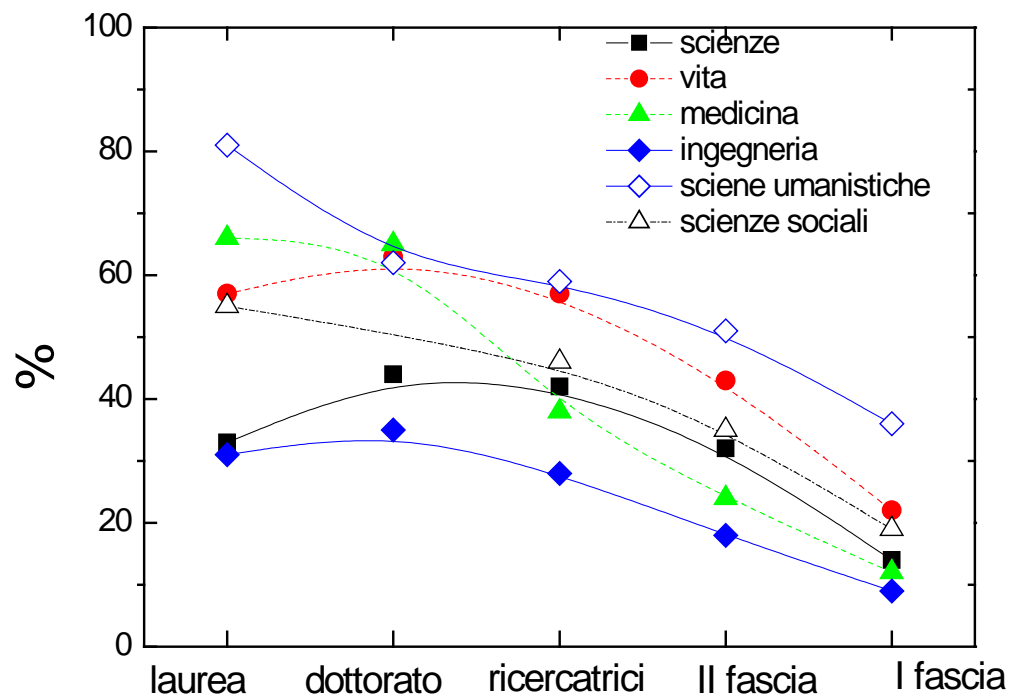
11/2016

Paolo Rossi - C.U.N.

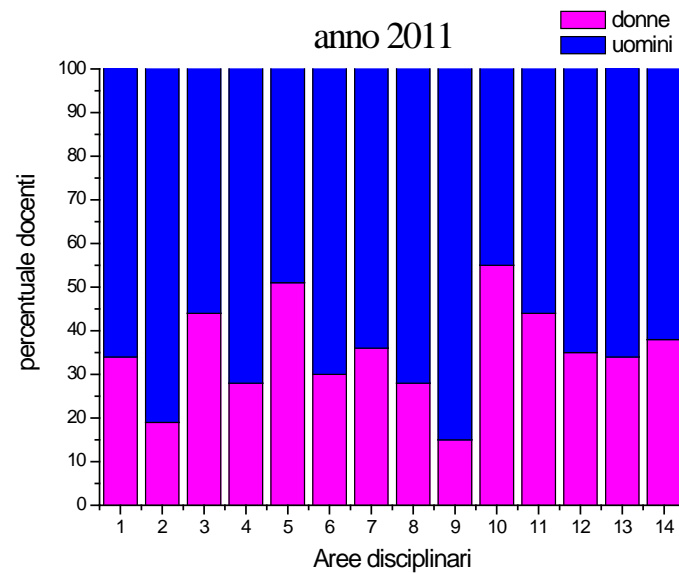
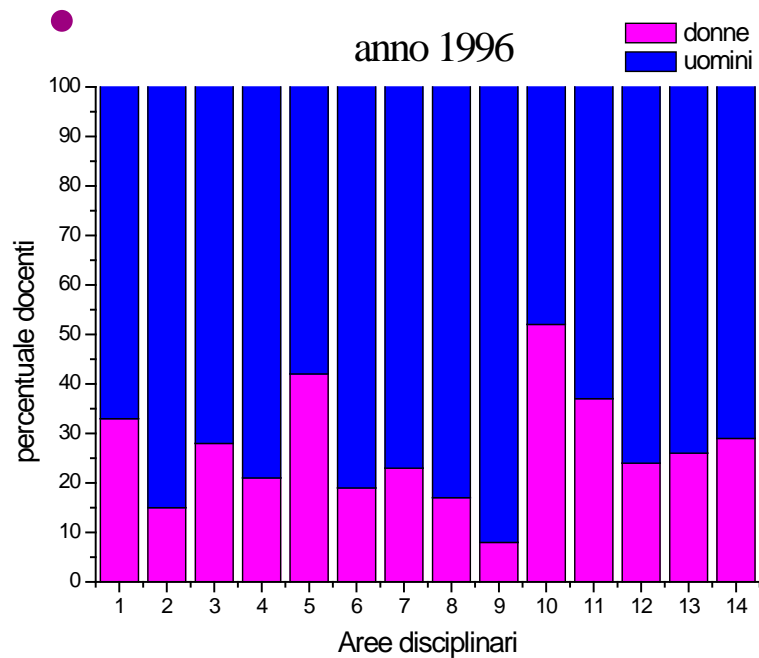
Le carriere

Valutazione

Modalità
concorsuali



Le aree



Che fare?

- **Analisi**
- **Disseminazione**
- **Rete**
- **Interventi strutturali**